

Windows NT

Setting Up Dial-up Networking:

The following steps will guide you through setting up Windows NT for a dial-up connection to MichNet.

Installing Dial-Up Networking Microsoft Introduction

Microsoft Windows NT includes TCP/IP and PPP software to facilitate easy dial-in connectivity. This section describes the steps in installing and using Windows NT's TCP/IP and PPP software.

1. Click on the **Start** button
2. Select **Programs**
3. Select **Accessories**
4. Select **Dial-up Networking**.

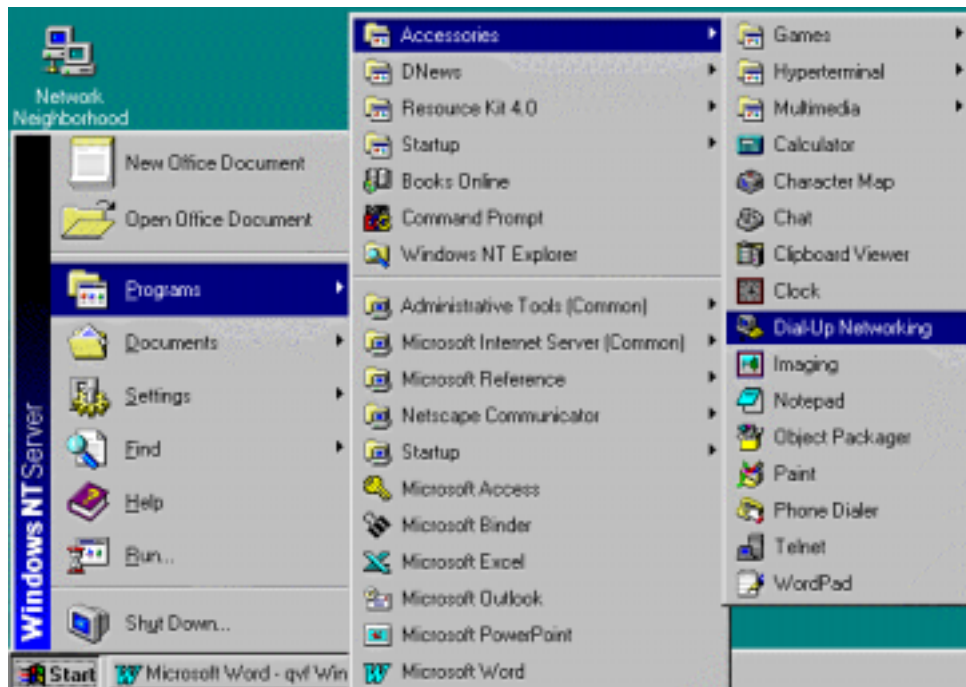


Figure 1.12

If dialup networking is not installed on your computer, you will be prompted to install the software. Insert the Windows NT CD and click OK to begin installation. Follow the on-screen instructions to install dial-up networking. (Fig. 1.13) You can leave all settings at their default values.



Figure 1.13

5. This step will set up remote access services on your computer. You will be prompted to restart your computer once completed, click **Restart**.
6. After dial-up networking is installed, a window called "**New Phonebook Entry Wizard**" will appear.
7. Place a checkmark in the "**I know all about phonebook...**" box
8. Click **Finish** and continue to step 1 in the next section.

Configuring Windows NT Dial-Up

Once dial-up networking is already installed, follow the steps below to add a MichNet new phonebook entry:

1. Click on the **Start** button,
2. Select **Programs**,
3. Then **Accessories**,
4. Then **Dial-Up Networking** – as seen in section 1 above (see *Figure 1.12*)
5. If dial-up networking is already installed a window called “**New Phonebook Entry**” will appear.
6. Under the “**Basic**” tab, enter the information provided to you from Merit Network. (see *Figure 1.14*)
7. The “**Comment**”, “**Phone number**”, and “**Dial using**” are the only entries that may vary from location to location.

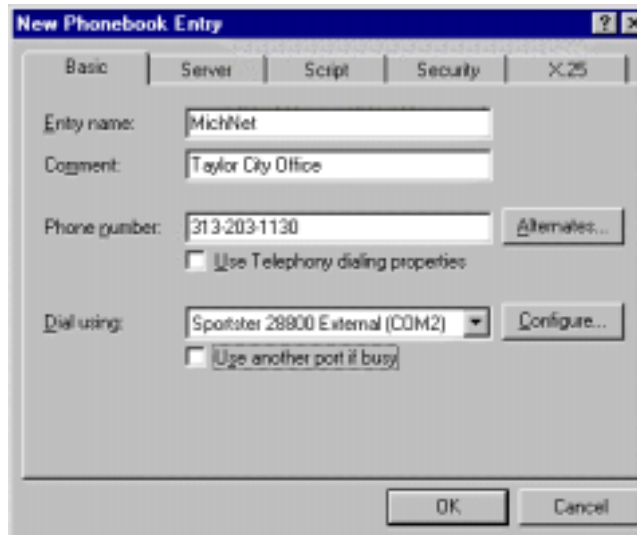


Figure 1.14

Configuring Dial MichNet for PPP access to MichNet.

1. Click the “**Server**” tab
2. Select “**PPP: Windows NT, Windows 95 Plus, Internet**” as the **Dial-up server type**.
3. Check the TCP/IP box and uncheck the other four boxes on this screen. (*Figure 1.15*)

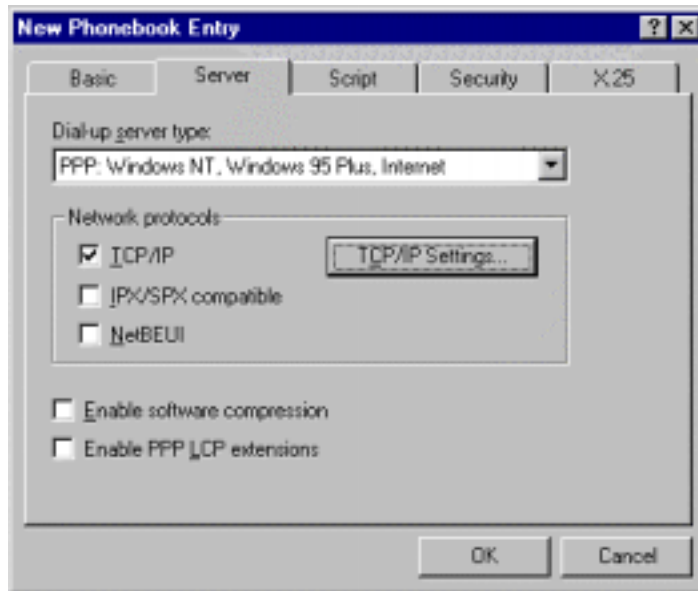


Figure 1.15

4. Click on the **TCP/IP Settings** button
5. The “**PPP TCP/IP Settings**” screen appears (see *Figure 1.16*)
6. Select “**Server assigned IP Address**”
7. Select “**Specify Name Server Addresses**”
8. Enter the name server addresses shown below in each of the boxes for **Primary DNS** and **Secondary DNS**
9. Leave the check marks in “**Use IP Header Compression**” and “**Use default gateway on remote network**”
10. Click **OK** to continue

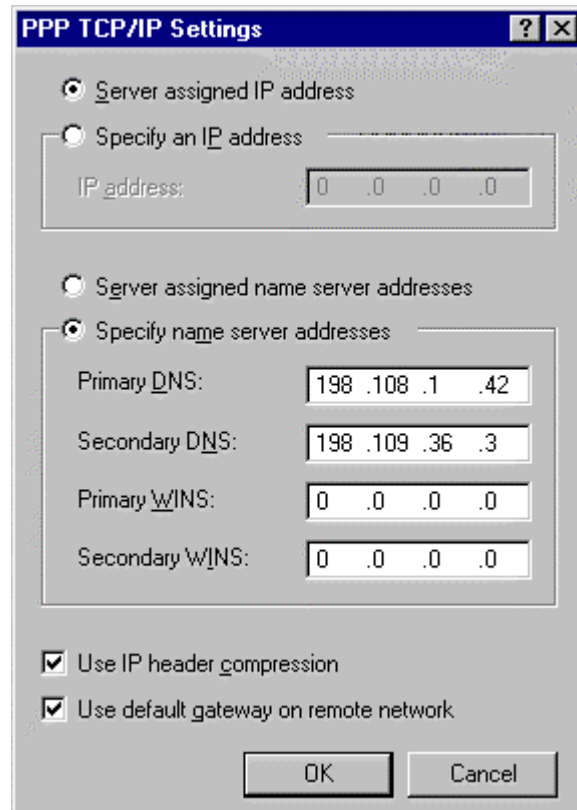


Figure 1.16

11. Click **OK** to finish this part of the configuration

**The remaining tabs in Figure 2.4 (Script, Security, and X.25) can stay at their default settings.*

Configuring the NT Dialer to Connect to the Internet

Once you click **OK** the “**Dial-up Networking**” window will appear.

1. Make sure your new MichNet entry appears in the “**Phonebook entry to dial**” drop-down field

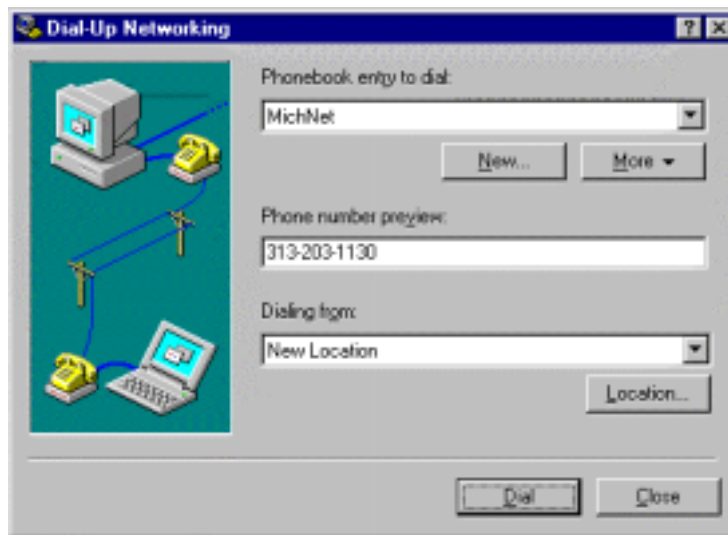


Figure 1.17

2. Click the **Dial** button (see *Figure 1.17*)

* *Dial-up networking will ask you to supply a User name and Password.* (see *Figure 1.18*)

3. Enter your user name and your domain: jdoe@omni.mi-twp.org
4. Enter your password
5. Leave the “**Domain**” window empty
6. If you have connected the modem to an analog phone line, click **OK** and Windows NT will connect you to MichNet

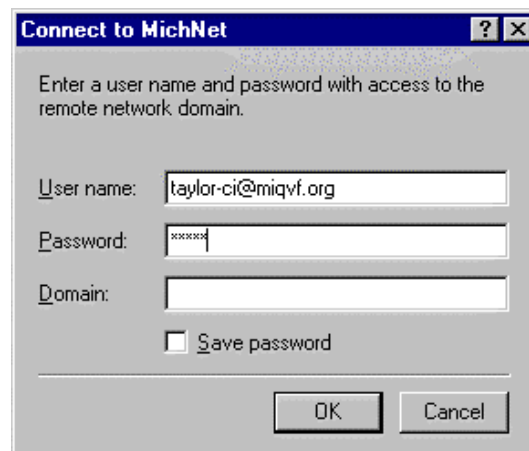


Figure 1.18

Modifying an Existing Configuration

To change an existing dial-up connection, follow the steps below:

1. Double click the “**My Computer**” icon
2. Double-click on the “**Dial-Up Networking**” icon (see *Figure 1.19*)

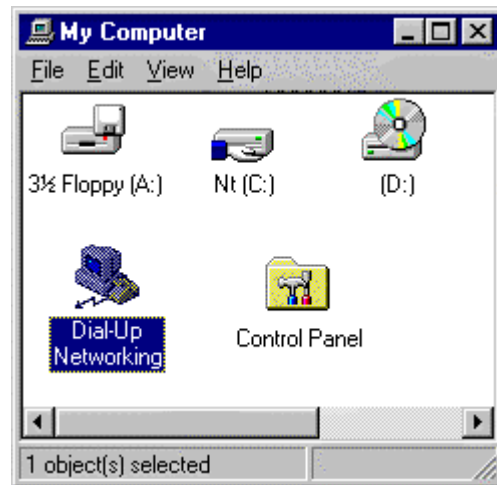


Figure 1.19

3. The “**Dial-up Networking**” window will appear
4. Click on the “**More**” button and then select
5. “**Edit entry and modem properties**” from the pull down box (*Figure. 1.20*)
6. The “**Edit Phonebook Entry**” window will appear

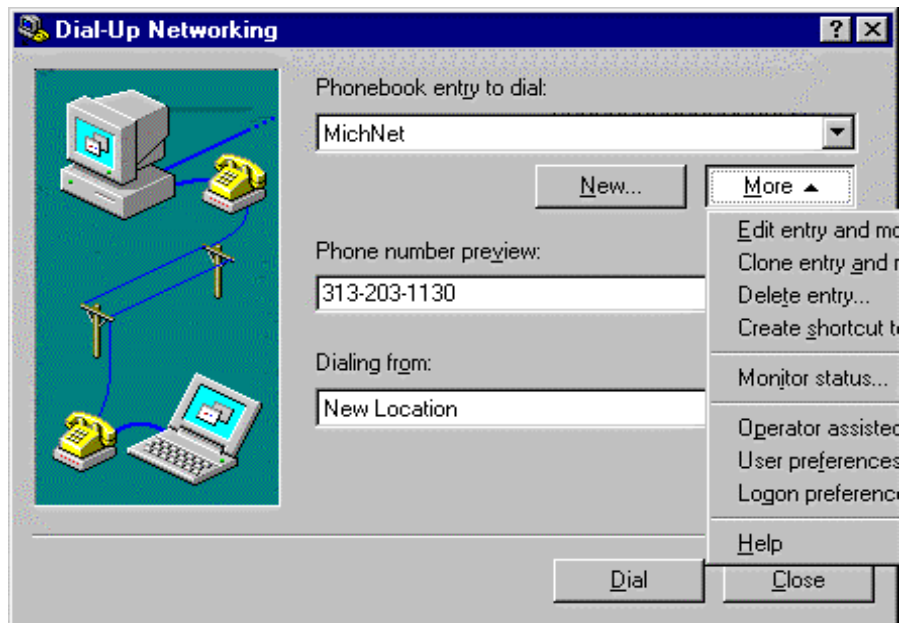


Figure 1.20

7. Under the “**Basic**” tab (see *Figure 1.21*), the “**Comment**”, “**Phone number**”, and “**Dial using**” are the only entries that will vary from location to location.
8. Click on the “**Server**” tab and return to *Figure 1.15* to finish the setup.

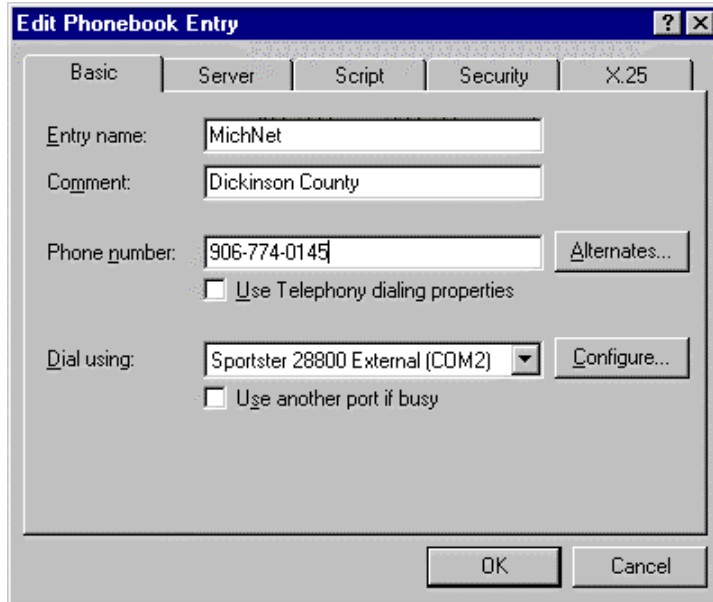


Figure 1.21

** Once you are connected you can run any Internet applications.*