

# Macintosh

## ***Setting Up Dial-up Networking***

*The following steps will guide you through setting up a Mac that is running MacOS 8.5 or later for a Michigan Townships Online dial-up connection to MichNet. If you have a problem connecting using the newest Macintosh OS 10.0 or 10.1 contact the NFPSupport Team.*

### Installing Mac TCP/IP Dial-up Networking

Dial-up networking on a Macintosh is configured through the Control Panel devices called "TCP/IP" and "Remote Access". They can be accessed from the Apple Menu under "Control Panels".

1. Open the Control Panel file for "**TCP/IP**"
2. Select the "**Options**" button in the lower right of the TCP/IP Control Panel Dialogue window
3. Make sure that the "**Active**" button is selected as shown in *Figure 1.29*

#### *Figure 1.29*

4. Click on the "**OK**" button to close and return to the TCP/IP Control Panel Dialogue window
5. In the upper pull down menu (Connect Via), select "**PPP**"
6. When you choose "**PPP**" in the "**Connect Via**" pull down menu, this should also automatically configure the second "**Configure**" pull down menu to be set to "**Using PPP Server**". If it does not, make sure the "**Configure**" pull down menu is set to "**Using PPP Server**," as shown in *Figure 4.2* below.

7. In the "**Name server addr**" field, type in the address for Merit's DNS server **198.108.1.42**

*Figure 1.30*

8. Close the TCP/IP Control Panel dialogue window by clicking on the small square at the top left of the window or by selecting "**Quit**" from the "**File**" pull down menu.

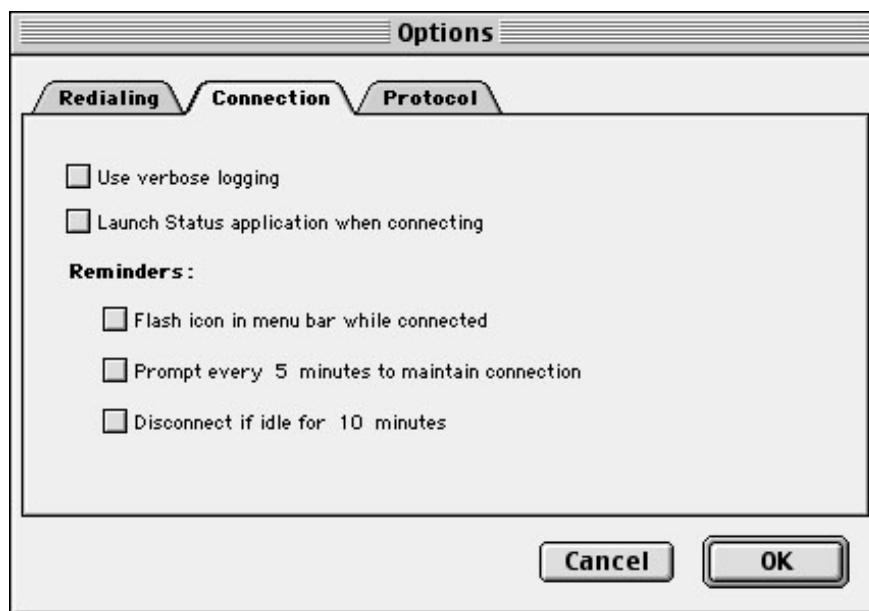
## Installing Remote Access

1. Open your Control Panel file to select "**Remote Access**"
2. Click on the "**Options**" button on the lower left corner of the dialogue window
3. Select the "**Redialing**" Tab. Set the pull down window to "**Redial main number only**"
4. Choose the number of times you wish the system to automatically redial if a busy signal is received, as seen in *Figure 1.31* below.

*Figure 1.31*

5. Click on the "Connection" Tab. Leave these settings all unselected as shown in *Figure 1.32*.

*\* You may configure any of the "Reminders" that you choose but none are necessary. "Verbose logging" is a trouble-shooting tool and should not be selected unless asked to do by Help Desk staff.*



*Figure 1.32*

6. Click the "**Protocol**" tab. Leave all of the first three boxes checked, as shown in *Figure 1.33*

*Figure 1.33*

7. Click the "OK" button, which will leave you back at the "**Remote Access**" Control Panel dialogue window.

## Setting Up a Remote Access Account

1. Make sure the "**Registered User**" button at the top is selected.
2. In the first field for "**Name**" type in your full user name, including the domain (the part including and after the "@" sign), as shown in *Figure 1.34* below
3. Most users will have a domain of their township name followed by "**mi-twp.org**".

*(example: omni.mi-twp.org)*

*NOTE: If your township is using a different domain, make sure you have entered your user name plus the "@" sign followed by your township domain in the "Name" field.*

4. Then type in your password.

Your password will be assigned initially by Merit. For configuring and connecting the first time, use the password given to you by your Township staff. You will be given the option to change your password on the [www.mi-twp.org](http://www.mi-twp.org) web site. If you change your password, be sure to make the appropriate changes in your "**Remote Access**" Control Panel dialogue window before connecting to MichNet again.



**Figure 1.34**

5. If you do not wish to be prompted for your password each time you connect to the Internet, then check the "**Save Password**" box
6. In the "**Number**" field, type in the Merit MichNet dial-up number given to you by your Township staff. In most cases this will not require an area code.
7. To determine your local access number go to the Merit "**Dialaccess**" search web page at:

<http://www.mi-twp.org/numbers.html>

8. Enter this telephone number in the "**Number**" field
9. Close the "**Remote Access**" Control Panel dialogue window by clicking on the small square at the top left corner of the window or by selecting "**Quit**" from the "**File**" pull down menu
10. You will be prompted on closing to "**Save Changes for current configuration...**"
11. Click the "**Save**" button to close the dialogue window

You are now configured for dial-up network access. You can get a network connection by either opening the "**Remote Access**" Control Panel dialogue window and selecting "**Connect**" or by just launching any Internet application, such as your mail client or your web browser.

*NOTE: The "Remote Access" Control Panel can also be accessed from your "Control Strip" (if enabled). The "Remote Access" icon looks like a telephone pole next to a computer screen. Click on the icon and select "Open Remote Access".*